

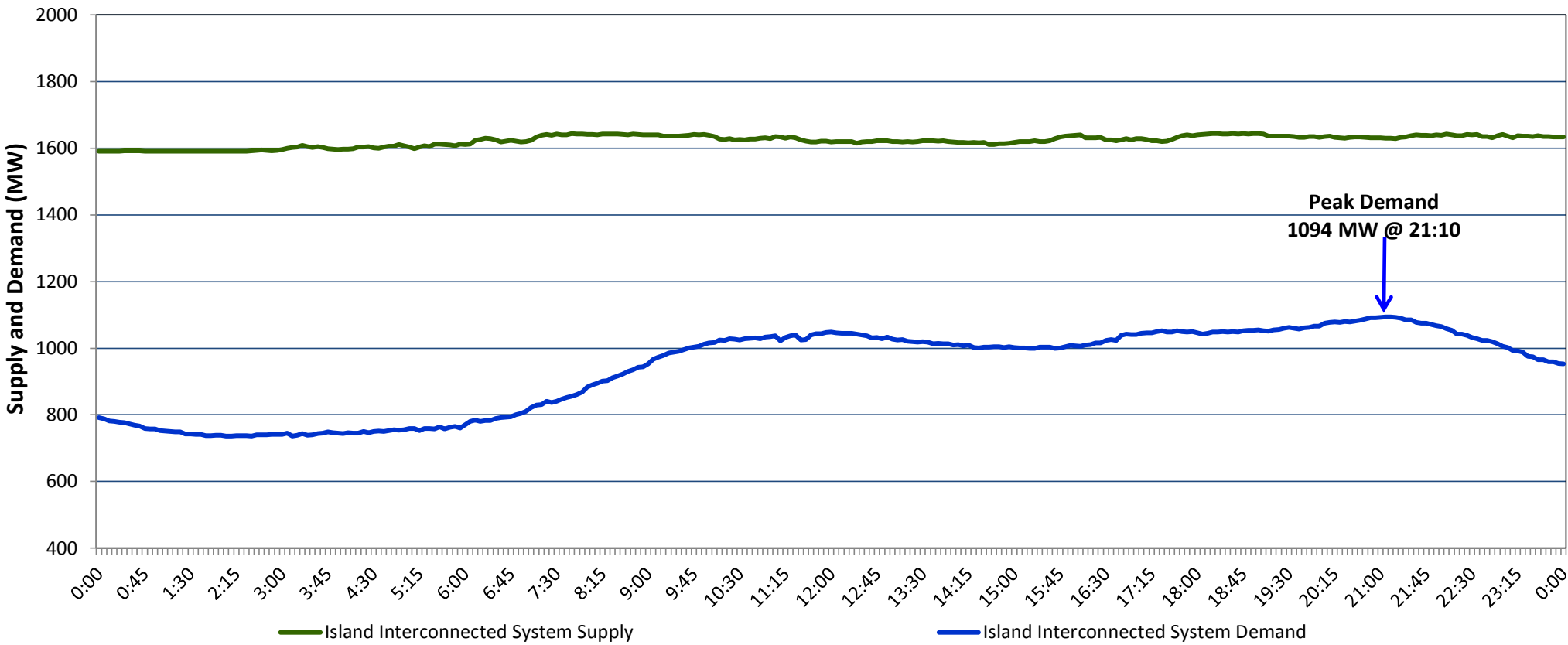
Newfoundland Labrador Hydro (NLH)

Supply and Demand Status Report Filed Tuesday, May 23, 2017

Section 1

Island Interconnected System Supply and Demand

Actual 24 Hour System Performance For Saturday, May 20, 2017



Supply Notes For May 20, 2017

- AAs of 0855 hours, May 01, 2017, Holyrood Unit 2 unavailable 165 MW (170 MW).
- BAs of 2003 hours, May 03, 2017, Bay d'Espoir Unit 3 unavailable due to planned outage (76. 5 MW).
- CAs of 0900 hours, May 04, 2017, Holyrood Unit 1 available at 120 MW (170 MW).
- DAs of 1510 hours, May 07, 2017, Bay d'Espoir Unit 4 unavailable due to planned outage (76. 5 MW).
- EAs of 0830 hours, May 09, 2017, Stephenville Gas Turbine unavailable due to planned outage 25 MW (50 MW).
- FAs of 0750 hours, May 10, 2017, Holyrood Unit 3 available at 147 MW (150 MW).
- GAs of 1300 hours, May 16, 2017, St. Anthony Diesel Plant available at 7.7 MW (9.7 MW).
- HAs of 1544 hours, May 19, 2017, Hawke's Bay Diesel Plant available at 2.5 MW (5 MW).

Section 2

Island Interconnected Supply and Demand

Sun, May 21, 2017		Island System Outlook ³	Seven-Day Forecast	Temperature (°C)		Island System Daily Peak Demand (MW)
				Morning	Evening	
Available Island System Supply: ⁵	1,585	MW	Sunday, May 21, 2017	1	1	1,195
NLH Generation: ⁴	1,260	MW	Monday, May 22, 2017	2	1	1,190
NLH Power Purchases: ⁶	130	MW	Tuesday, May 23, 2017	1	6	1,125
Other Island Generation:	195	MW	Wednesday, May 24, 2017	6	7	990
Current St. John's Temperature:	0	°C	Thursday, May 25, 2017	7	11	940
Current St. John's Windchill:	-4	°C	Friday, May 26, 2017	13	14	830
7-Day Island Peak Demand Forecast:	1,195	MW	Saturday, May 27, 2017	14	1	1,030

Supply Notes For May 21, 2017

- Notes:
1. Generation outages for running and corrective maintenance are included. These are not unusual for power system operations. They generally do not impact customer supply. The power system operators schedule outages to system equipment whenever possible to coincide with periods when customer demands are low and sufficient supply reserves are available. However, from time to time equipment outages are necessary and reserves may be impacted.
2. Due to the Island Interconnected System being isolated from the larger North American grid, when there is a sudden loss of large generating units some customer's load must be interrupted for short periods to bring generation output equal to customer demand. This automatic action of power system protection, referred to as under frequency load shedding, is necessary to ensure the integrity and reliability of system equipment. Under frequency events typically occur 5 to 8 times per year on the Island Interconnected System and the resultant customer load interruptions are generally less than 30 minutes.
3. As of 0800 Hours.
4. Gross output including station service at Holyrood (24.5 MW) and improved NLH hydraulic output due to water levels (35 MW).
5. Gross output from all Island sources (including Note 4).
6. NLH Power Purchases include: CBPP Co-Gen, Nalcor Exploits, Rattle Brook, Star Lake, Vale capacity assistance (when applicable), and Wind Generation.

Section 3

Island Peak Demand Information

Previous Day Actual Peak and Current Day Forecast Peak

Sat, May 20, 2017	Actual Island Peak Demand ⁸	21:10	1,094 MW
Sun, May 21, 2017	Forecast Island Peak Demand		1,195 MW

Notes: 8. Island Demand is supplied by NLH generation and purchases, plus generation owned and operated by Newfoundland Power and Corner Brook Pulp & Paper (Deer Lake Power, DLP).